

Registration information

Registration fees inclusive of GST	Before 5 June	Before 27 July	After 27 July
Member Full Delegate	\$924.00	\$990.00	\$1,100.00
Non-Member Full Delegate	\$979.00	\$1045.00	\$1,155.00
Conference Day Registration	\$396.00	\$396.00	\$440.00

Registration fee inclusions

Full conference registration includes:

- Three full days of sessions (Thurs to Sat)
- Delegate conference materials
- Welcome Reception on Thursday
- Lunch, morning and afternoon tea on Thursday, Friday and Saturday
- Conference Dinner on Saturday

Day registration includes:

- One full day of conference sessions (Thursday, Friday or Saturday)
- Delegate conference materials
- Lunch, morning and afternoon tea on day of attendance

Please note all evening functions are additional for day registrations.

Methods of registration

Online — Visit www.acpetconference.info and follow the links to online registration. Payment can be made at the time of registration by **Visa** or **Mastercard**.

Electronic Funds Transfer — Complete the online form and select 'Registration without Payment' (before 27 July only) or you may also complete the registration form and fax it to 02 4984 2755. EFT payments will be accepted, free of fees, to the account listed below. To ensure prompt reconciliation, please send a copy of the transfer record to acpet@pco.com.au or fax 02 4984 2755.

SWIFT Code: WPACAU25

BSB Number: 032533 Account Number: 165381

Account Name: Tulips/ACPET

Bank: Westpac, Magnus Street, Nelson Bay, NSW.

Cheque — Complete the online form and at the very end select 'Registration without Payment' (before 27 July only) or send your completed registration form with payment to: ACPET 2009 National Conference, Tulips Meetings Management, PO Box 116, Salamander Bay NSW 2317 Australia. Cheques should be made payable to Tulips/ACPET.

GST

ABN: 32 003 901 657. The registration form is a tax invoice after payment has been made. All registration fees are inclusive of GST. Please note accommodation deposits do not include GST, as they are deposits only. Delegates will be issued tax invoices for accommodation by the applicable hotel at the time of check-out.

Cancellations and refunds

Cancellation must be made in writing to the Conference Secretariat. Cancellations received before 5 June 2009 will be refunded less an administration fee of \$110.00. Cancellations received before 27 July 2009 will be refunded less an administration fee of \$330.00. Cancellations made after this date will not be eligible for a refund, however, registrations may be transferred. Deposits for accommodation will be refunded up to 45 days before the arrival date. After this time refunds will be at the discretion of the hotel.

Special requirements

Please indicate any special requirements, including special dietary requirements, on the registration form or email acpet@pco.com.au.



Disclaimer

Every effort has been made to present as accurately as possible, all the information contained in this brochure. ACPET, Tulips Meetings Management and its Agents act only to procure and arrange these activities and do not accept responsibility for any act or omission on the part of the service providers. No liability is accepted for any inaccuracy or misdescription, nor for delay or damage, including personal injury or death, howsoever caused resulting from or arising out of reliance upon any general or specific information published in this brochure. In the event of unforeseen circumstances, ACPET reserves the right to change any or all of these details.

Privacy

A listing of delegate contact details will be issued to all delegates and sponsors. If you do not want your details included on this list, please advise the Conference Secretariat in writing.

Insurance

Delegates should ensure they have sufficient personal insurance to cover any medical expenses, damage or loss of personal effects. The Conference Committee nor the Conference Secretariat accept liability for personal injury or loss or damage to property belonging to delegates during the conference or conference or any affiliated events.

Accommodation

All rates are per room, per night and do not include breakfast unless otherwise specified.

The Conference Secretariat has secured blocks of accommodation with each hotel/apartment block below, and requests that all bookings and enquiries regarding accommodation be made directly with the Conference Secretariat and not with the hotels/apartments. **The deadline for guaranteed hotel reservations through the Conference Secretariat is 7 December 2008.** Bookings after this date will be subject to room availability. Early accommodation bookings are advised.

Rates include GST (Australian Goods and Services Tax) and are quoted on a per room per night basis and do not include breakfast unless indicated. These rates cannot be guaranteed for accommodation requests made after 24 June 2009. Rates after this time are subject to availability and change. Accommodation cancelled within 45 days of arrival will be subject to a cancellation fee of the first night's accommodation, at the hotel's discretion. Accommodation cancelled within 7 days of arrival will be subject to a cancellation fee of the full accommodation charge, at the hotel's discretion. Distances indicated are between the hotel/motel and the NCC.

Deposit

A deposit of one night's accommodation is required to secure the reservation (you may also pre-pay your total accommodation if preferred). This deposit will be forwarded to the hotel and will be deducted from the final account. A tax invoice will be issued by the hotel. Guests are responsible for paying the balance to the hotel on departure.

Cancellation

Failure to arrive on the date specified will incur forfeiture of deposit. Final dates must be advised at least 30 days out from your arrival date—otherwise cancellation fees may apply to all nights that are cancelled. This policy varies from hotel to hotel.

Change of booking

Prior to 20 August 2009 changes can be made through the Conference Manager; after this date please contact the relevant hotel directly and advise the Conference Manager of the change as soon as possible.

Early arrivals & late departures

All requests for early check-in and late checkout will be passed on to the respective hotels, however, no guarantees can be made. Check-in is usually after 2:00pm and checkout by 10:00am.

Bedding preference

Please advise bedding preference on registration form; for example: 1 queen and 2 singles

Twin: Two people requiring two separate beds

Double: Two people sharing one bed

Single: One person in one bed

Hotels within walking distance to NCC (bus transfers will only be provided for Social Events)

Crowne Plaza Canberra ★★★★★



Crowne Plaza Canberra is a deluxe 4.5 star hotel with 295 well-appointed accommodation rooms with both Glebe Park and city views. The hotel is adjacent to the NCC and close to restaurants and bars. The hotel is contemporary and modern in architecture and design. Facilities of the hotel include Redsalt Restaurant, Atrium Lounge, Binara One lounge bar, Glebe Park Health Club with sauna and outdoor pool, Serani Health Spa, 24-hour business centre, broadband in all guest rooms with wireless connectivity in public areas, and secure undercover car parking.

Address: 1 Binara Street, Canberra City, Canberra ACT 2601

Email: res@crowneplazacanberra.com.au

Facsimile: 02 6247 3706

Telephone: 02 6247 8999

Tollfree: 1300 666 545

Website: www.crowneplaza.com.au/canberra

Rates

\$250.00 Superior king or twin (2 double beds)

\$290.00 Deluxe king or twin (2 double beds)

Rollaway beds cannot be added to rooms, but one extra adult can share a twin room (3 adults in total) for an extra \$65 per night.

- Undercover parking is \$15 per night

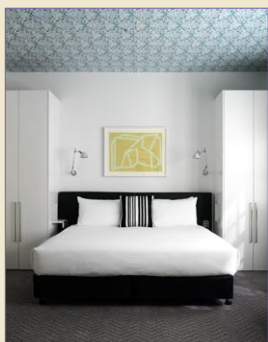
- Internet usage in deluxe rooms is free of charge, in the superior rooms the charge is \$30 per 24-hour usage and the Reception area has wireless internet available in the lounge. The business centre offers free-of-charge internet for in-house guests.

- Breakfast is \$20.00 per person for a full buffet breakfast in Redsalt Restaurant

Distance from NCC

500-metre walk to the NCC

Diamant Hotel Canberra ★★★★★



This spectacular 80-room luxury boutique hotel is positioned by Lake Burley Griffin. Originally the Hotel Acton building; this historical, heritage-listed site has been transformed into the NewActon Pavilion. The Diamant is part of Canberra's first true urban village; immersed in a series of unique designer landscaped gardens and specialist retailers. The Diamant offers exceptional quality and extraordinary comfort. Other hotel facilities include restaurant and bar, day spa and well-being retreat, business centre, hotel gym, undercover secure parking (charged \$20.00 p/n) and 24-hour concierge.

Address: 15 Edinburgh Avenue (cnr Marcus Clarke Street), Acton, Canberra ACT 2601

Email: info.can@diamant.com.au

Facsimile: 02 6175 2233

Telephone: 02 6175 2222

Website: www.diamant.com.au

Rates

\$210.00 Standard room

- Parking is limited at the hotel, underground parking is \$20.00 per day and advance booking is essential. Alternatively a public car park is located to the side of the hotel and daily use of this is \$9.50 per day.

- Continental breakfast is \$15 per person per day, a la carte hot options also available at an extra cost

- Internet is \$7 for one hour, \$20 for one day or \$30 for 2 days

Distance from NCC

1.6 km, 12-minute walk to the NCC

Accommodation information CONTINUED

Hotels within walking distance to NCC

(bus transfers will only be provided for Social Events)

Rydges Lakeside Canberra ★★★★★



Rydges Lakeside Canberra is located on the shores of Lake Burley Griffin. Facilities include a indoor heated swimming pool, room service, mini bar, TV, tea/coffee facilities and 24-hour reception. The Burley Griffin Skyline Restaurant is located on Level 15 and offers fine dining every night, Bobby McGees is open for breakfast and lunch 7 days a week and dinner on Friday and Saturday. All guest rooms have balconies with views of the city or Lake Burley Griffin and surrounding mountains.

Address: **London Circuit, Canberra City, Canberra ACT 2601**
Email: reservations_canberra@rydges.com
Facsimile: **02 6257 3071**
Telephone: **02 6247 6244 / Tollfree: 1800 026 169**
Website: www.rydges.com/Canberra

Rates

- \$179.00** Standard Room (Queen bed or 2 x Single beds)
- \$209.00** Lakeview Room (Queen bed)
 - Breakfast is \$19 per person per day
 - Broadband Internet is \$29.95 for a 24 hour continuous block
 - Car parking is subject to availability at the time of booking and is \$12 per car per night

Distance from NCC

1 km, 10–12 minute walk to the NCC

Medina Executive James Court ★★★★★



Superbly located in the heart of the city, this apartment hotel features newly refurbished one and two bedroom apartments. Facilities include a pool, spa, sauna and gym. Apartments contain a separate living and dining area, a fully equipped kitchen, bathroom with spa (2-bedroom apt has 2 bathrooms) and washer and dryer. Medina Executive James Court has a 'No Entertaining – party' policy. There are to be no more people in the apartment at any time other than the specified number of guests in your reservation. Anyone found in breach of this policy will be asked to leave with no refund. Please note, they do NOT have a restaurant on site. Breakfast is available in the city centre, an approximate 5 min. walk away.

Address: **74 Northbourne Avenue, Canberra ACT 2601**
Email: mej@medinaapartments.com.au
Facsimile: **02 6240 1235**
Telephone: **02 6240 1234 / Tollfree: 1300 633 462**
Website: www.medinaapartments.com.au

Rates

- \$154.00** One bedroom apartment (queen bed)
- \$199.00** Two bedroom apartment (2 x queen beds or 1 x queen + 2 single beds)
- Extra Person (sofa bed) \$40**
 - Secure underground parking is available for \$8 per night, there is also off-street parking at the back of the building which is free on weekends
 - ADSL Broadband is available in the rooms, charges are \$11/1 hour or \$22/24 hours
 - No restaurant on-site

Distance from NCC

1km, 12-minute walk to the NCC

Waldorf Apartment Hotel ★★★★★



Facilities include: 24-hour Reception, fully equipped gym with indoor heated lap pool, sauna and spa, rooftop half tennis court and table tennis, rooftop terrace area with BBQ, onsite secure underground car parking, award-winning restaurant and bar 'Waldorf on London' offering modern Australian cuisine with an Asian influence and room service. Apartment facilities include: fully self-contained kitchen and laundry, lounge area and dining suite, complimentary Foxtel and pay-per-view in-room movies, private phones, VCR players and fax machine, broadband internet access and in-room safe.

Address: **2 Akuna Street, Canberra ACT 2601**
Email: sale@waldorfc Canberra.com.au
Facsimile: **02 6229 1235**
Telephone: **02 6229 1234**
Website: www.waldorfc Canberra.com.au

Rates

- \$180.00** (1 adult) / **\$195.00** (2 adults) studio apartment (king bed or 2 x singles)
- \$200.00** (1 adult) / **\$215.00** (2 adults) one-bedroom apartment (king bed or 2 x singles)
- \$260.00** (1 adult) / **\$275.00** (2 adults) two-bedroom apartment (king bed or 2 x singles plus 1 queen bed), extra \$15 per person for 3rd and 4th adult in apartment
 - All above rates INCLUDE a continental breakfast
 - Wireless internet: \$5.00 for 1 hour or \$15.00 for 24 hours
 - Car park access is \$15.00 per night

Distance from NCC

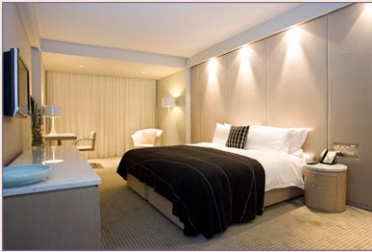
800m, 3-minute walk

Accommodation information CONTINUED

Hotels more than 15 minutes walk to the NCC

[bus transfers will be provided to and from the conference daily and to all Social events]

Hotel Realm ★★★★★



Hotel Realm is effortlessly chic; combining contemporary elegance with avant-garde design. This unique hotel offers a choice of interesting dining venues and leisure spaces. Hotel Realm has 158 luxury hotel and suite style accommodation rooms, a bar and an executive floor like no other. Level Five offers indulgent breakfasts, evening drinks and canapés in the exclusive Barton Rooms. Evo Health Club is state of the art and offers the very latest gymnasium solutions, equipment and mud the spa for total wellness and relaxation. Hotel Realm is part of a truly mixed-use precinct within the parliamentary triangle located at the footsteps of Parliament House. Hotel Realm is Canberra's newest five star hotel.

Address: **18 National Circuit, Barton, Canberra ACT 2600**
Email: reservations@hotelrealm.com.au
Facsimile: **02 6163 1801**
Telephone: **02 6163 1888**
Website: www.hotelrealm.com.au

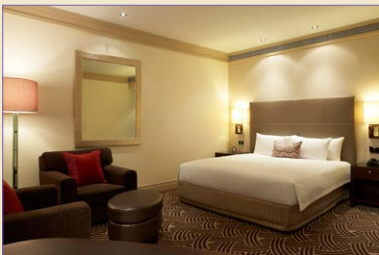
Rates

- \$295.00** Realm Room (king bed)
- Parking is \$10 per night
- Full buffet breakfast is \$28.00 per person and continental is \$22.50 per person
- Internet 1 Hour: \$9.95 / Half Day: \$16.95 / Full Day: \$29.95 / 1 Week: \$80

Distance from NCC

12–15 minute bus transfer to the NCC

Hyatt Hotel of Canberra ★★★★★



The Hyatt Hotel Canberra is located between Parliament House and Commonwealth Bridge in the Parliamentary Triangle and With its 1920's architecture, furnishings and staff uniforms the hotel encourages all guests to take a step back through time. Heritage listed, this luxurious boutique hotel has been restored to its art deco grace and charm with extensive renovations elevating the hotel to the prestigious Park Hyatt branding. The atmosphere is one of a welcoming 'home away from home', a genteel estate surrounded by landscaped lawns and gardens. Facilities include: two restaurants and the Tea Lounge, 24-hour room service and complimentary daily newspaper. The fitness centre houses an indoor pool, spa, saunas, fully equipped gymnasium, tennis court, massage facilities and bicycles with easy access to lakeside tracks.

Address: **Commonwealth Avenue, Yarralumla, Canberra ACT 2600**
Email: canberra@hyatt.com.au
Facsimile: **02 6281 5998**
Telephone: **02 6270 1234 / Tollfree: 13 1234**
Website: www.canberra.park.hyatt.com

Rates

- \$285.00** Park Room (king)
- \$595.00** Park Suite* (king)
- *Park Suite rates include access to the Ambassador's Lounge with continental breakfast and drinks and canapés each evening.
- There are 200 complimentary public parking spaces located around the hotel and 60 underneath the hotel which cost \$25.00 for 24 hours
- Full buffet breakfast is \$39.00 per person and continental is \$32.00 per person
- Broadband internet is \$29.00 for 24 hours

Distance from NCC

20-minute walk or 10–12 minute bus transfer to the NCC

Olims Hotel Canberra ★★★★★



Olims Hotel Canberra surrounds a picturesque garden courtyard and is within walking distance of the CBD, shops and the War Memorial. The hotel has a restaurant, bistro, beer garden and cocktail lounge. Security parking, 24-hour reception and direct internet access. All room are non-smoking.

Address: **cnr Ainslie & Limestone Avenues, Braddon, Canberra ACT 2612**
Email: reservations@olimshotel.com
Facsimile: **02 6243 0001**
Telephone: **02 6243 0000 / Tollfree: 1300 656 565**
Website: www.olimshotel.com

Rates

- \$175.00** Superior Room (queen bed)
- \$193.00** Deluxe Loft (queen bed)
- Breakfast is \$15 if pre-booked or \$19 on the day
- Internet charges are \$5.00/half hour, \$10.00/hour or \$16.00 for 24 hours
- Parking is complimentary for all hotel guests

Distance from NCC

2 km, 20-minute walk or 12-minute bus transfer to the NCC